

## Eslabón rápido de unión Nemag

---

### Información del producto



The Nemag Quick Release Link has been balanced and perfected to become the most reliable, quickest and safest coupling method for ropes and chains. The contact surface of the C-section has been hardened, which considerably lengthens the life span. The construction of the locking piece ensures reliable functioning; even under severe circumstances. The locking pieces are interchangeable.

**Optional:** Nemag also supplies a key especially designed for the Quick Release Link. This key has a hexagonal head that fits into the keyhole of the locking piece. The horizontal handle provides sufficient grip to be able to open or close any locking piece with one short movement. The sharp end of the handle can be used to remove dirt on the outside (of the keyhole).

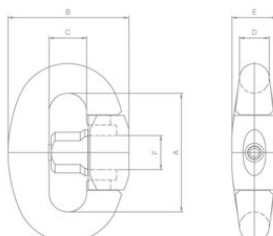
... [Más información](#)

---

**Marcado:** According to standard, CE-marked  
**Certificación:** EN 1677-1

## Eslabón rápido de unión Nemag

### Plano



### Datos técnicos

Referencia CYE	Código	Fuerza máxima de utilización WLL	Fuerza mínima de rotura MBL	A mm	B mm	C mm	D mm	E mm	F mm	Peso kg
Y6AHAMRAP004	RL-4	3	25	76	76	24,5	19	30	21	0,9
Y6AHAMRAP005	RL-5	4,5	33	84	84	27	21	32,5	23	1,2
Y6AHAMRAP006	RL-6	5	37,5	92	92	29,5	23	35	25	1,5
Y6AHAMRAP007	RL-7	7	49	100	100	32	25	38	28	2
Y6AHAMRAP008	RL-8	8	54	108	108	34,5	27	40,5	31	2,5
Y6AHAMRAP009	RL-9	9,5	60	116	116	37	29	43,5	34	3,1
Y6AHAMRAP010	RL-10	12	75	128	128	40,5	32	48	37	4,4
Y6AHAMRAP011	RL-11	15	95	140	140	44	35	53	40	5,7
Y6AHAMRAP012	RL-12	17	110	152	152	47,5	38	57	43	7,2
Y6AHAMRAP013	RL-13	21	135	164	164	51	41	61,5	46	8,7
Y6AHAMRAP014	RL-14	26	160	176	173	54	44	66	50	11
Y6AHAMRAP015	RL-15	30	175	188	188	58	47	70,5	52	13,5
Y6AHAMRAP017	RL-17	42,5	260	222	222	68	56	84	62	23